

cleaning/maintenance

N.B. Before internal cleaning, switch off unit.

8 Cleaning Instructions

Important Cleaning Instructions

Cared for correctly, stainless steel has the ability to resist corrosion and pitting for many years.

The following weekly cleaning regime is recommended:

- Exterior: Use a proprietary stainless steel cleaner following the manufacturers instructions.
- Interior: Wash with soapy water, rinse and dry thoroughly.

WARNING:

High alkaline cleaning agent or those containing bleaches, acids and chlorines are very harmful to stainless steel. Corrosion and pitting may result from their accidental or deliberate application. If any of these liquids should come into contact with the unit during general kitchen cleaning, wipe down the affected area immediately with clean water and rub dry.

Never use wire wool or scouring powders on stainless steel or aluminium surfaces.

After cleaning allow the unit to reach its normal operating temperature before reloading with product. During usage all spills should be wiped clean immediately but care should be taken not to touch the interior of freezer units as warm skin can 'freeze' to metal or heated cabinets.

9 Drawer Gaskets

These should be inspected on a regular basis and replaced if damaged. To clean, wipe with a warm damp soapy cloth followed by a clean damp cloth and finally thoroughly dry before closing the door.

10 Condenser

Clean the condenser, located in the unit compartment, when it becomes dirty.

Important: Disconnect the mains electrical supply to the machine prior to cleaning the condenser.

Clean the condenser using a soft brush or vacuum cleaner. NOTE: if there are any stubborn grease deposits etc left on or through the condenser call your Foster Authorised Service Company to carry out a full service. Once the condenser has been cleaned switch the unit on.

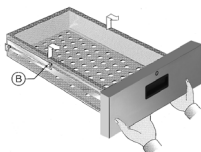
Failure to carry out this action may invalidate the warranty of the condensing unit. Any service calls due to lack of maintenance may be chargeable.



11 Drawer Removal

Refrigerated Drawers

To remove these drawers pull out to full extent and lift the drawer so that the rollers B pass through the slots in the drawer runners.



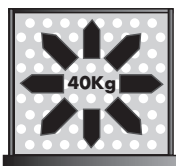
12 Airflow

When loaded, ensure that air can circulate around / through stored products.



13 Load Distribution

Evenly distribute the load.



14 Food

Cover all foods and separate raw and cooked foods.



In heated cabinets cover food to prevent dehydration and fill the high humidity container in the base with water.

operation failure

15 Problem Diagnosis

Checks must be carried out by a competent person.

Before calling a Foster Authorised Service Company check the following:

- Power failure (may be off at source)
- Fault conditions as described in User Operational Guidelines - Alarms and Warnings.
- Damaged mains lead plug.

When requesting service assistance always quote the following:

- unit serial number (E.....)
- the model number from the serial number plate located inside the unit.
- If a "Fault Code " appears quote the "Fault Code Reference" to the Foster Authorised Service Company.

low level counters installation and operating instructions

GB

Operating instructions



Foster Refrigerator

Oldmedow Road, King's Lynn,
Norfolk, PE30 4JU
England

Tel: 01553 691122

Fax: 01553 691447

Website: www.fosterrefrigerator.co.uk

Email: sales@foster-uk.com

a Division of ITW (UK) Ltd.

LU/OP/04-06

installation

IMPORTANT:

To the installer: Installation of these units should be carried out by a competent person and the appropriate codes of practice adhered to, thus ensuring safe installation.
Pass to the user: Do not discard this document; it contains important guidelines on Operation, Loading, Cleaning and Maintenance and should be kept for reference.

DISPOSAL REQUIREMENTS

If not disposed of properly all refrigerators have components that can be harmful to the environment. All old refrigerators must be disposed of by appropriately registered and licensed waste contractors, and in accordance with National laws and regulations.

1 Positioning/unpacking

Counter removal from the pallet:

Counters fitted with castors -

Remove fittings from inside the unit and ensure all drawers and doors are locked before removal from the pallet. Cut the heavy duty cable ties that hold the front castors to the pallet. Unlock the castors and then carefully roll the unit forward off the pallet.

Counters fitted with legs - Remove fittings from inside the unit and ensure all drawers and doors are locked before removal from the pallet.

Remove the fixing blocks located in front of the legs at the front of the unit and cut the straps securing the unit to the pallet. Carefully manoeuvre the unit forward, off the pallet.

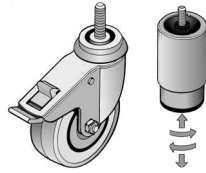


castors



legs

2 Castors/legs/feet



All models are normally fitted with swivel castors. Ensure during installation the unit is level if not the door(s) may not close correctly. Adjust castors by inserting spacers under the appropriate castor and the base of the unit until level. As an alternative adjustable legs can be fitted to all models. As an alternative 8mm threaded adjustable leveling feet are available for 'U' mount cabinet models, for all other models 12mm threaded adjustable leveling feet are available. (Fitting method as castors or legs).

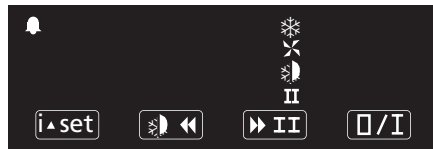
start up

3 Switching On

If the unit has been laid on its back at any time DO NOT switch on immediately but leave in the upright position for at least 60 minutes. To switch on the unit see 'User Operation Guidelines'. Allow the unit to reach its normal operating temperature before loading with product.

user operation guidelines

Controller



4 Initial Start Up

Your new Foster Cabinet will be delivered ready to run. Plug into the mains supply and the unit will operate in the following way.

Start Up & Self Test: The indication is only displayed during the first three seconds following the mains electrical power being applied to the unit. During this period the controller performs a self-check.

Once the self-check has been completed **OFF** will be displayed.

5 Operator Instructions

1. To Start the Unit

Press and hold **O/I** for three seconds. The unit will start and the air temperature will be displayed.

2. To Check Storage Temperature Set Point

Check set point by pressing the button **i set**

Exit from set up occurs after 10 seconds if no button is pressed.

5 Operator Instructions

3. Manual Defrost

To initiate a manual defrost press and hold **DEF** will be displayed release.

On completion of the defrost **REC** will be displayed until the cabinet temperature is achieved and then it will revert to displaying the normal cabinet temperature.

4. Set Unit to Standby.

Press **O/I** display shows **OFF** (standby indication)

Standby Indication

This indication is displayed while the unit is not operating but with mains power applied to the unit. This mode may be used for internal cleaning regimes and short periods when the unit is not required. For extended periods of inactivity the mains supply should be isolated.

6 Alarms and Warnings

Door Open Alarm (Only applies to cabinets fitted with door switches.)

DO Will be displayed.

The alarm will sound but can be silenced by pressing **O/I**. The display will continue to display the alarm message until cancelled by shutting the door. If the alarm cannot be cancelled by doing this call your Foster Authorised Service Company.

High Pressure Alarm. (Only applies to machines fitted with a condenser probe.)

HP Will be displayed.

This alarm relates to the condenser which must be checked and cleaned at regular intervals the frequency being determined by site conditions. (See 'Condenser Clean' instruction). The alarm will sound but can be silenced by pressing any of the buttons and the unit will continue to operate, however it will return after the pre-set designated period. The unit returning to normal operating temperature will automatically cancel the alarm. If this does not occur after 4 hours check that the condenser is clean and clear of any obstruction or call your Foster Authorised Service Company.

High temperature alarm

HI Will be displayed.

The alarm will sound but can be silenced by pressing any of the buttons, however it will return after the pre-set designated period. If the unit returns to normal operating temperature the alarm etc. will be cancelled automatically. If this does not occur after 4 hours call your Foster Authorised Service Company.

Low temperature alarm.

LO Will be displayed.

The alarm will sound but can be silenced by pressing any of the buttons and the unit will continue to operate, however it will return after the pre-set designated period. If the unit returns to normal operating temperature the alarm etc. will be cancelled automatically. If this does not occur after 4 hours call your Foster Authorised Service Company.

Air Temperature Probe Failure.

E1 Will be displayed.

The alarm will sound but can be silenced by pressing any button. There is no further action that can be taken by the user in this instance; therefore call your Foster Authorised Service Company as soon as possible. During this period the unit will continue to operate but have a reduced performance.

Evaporator Temperature Probe Failure. (Freezer Cabinets Only)

E2 Will be displayed.

The alarm will sound but can be silenced by pressing any button. There is no further action that can be taken by the user in this instance; therefore call your Foster Authorised Service Company as soon as possible. During this period the unit will continue to operate satisfactorily, but this failure will have an effect on the defrost and therefore efficiency if allowed to continue.

7 Drawer Lock

To lock the door, insert the key and turn through 90°.